

CERTIFIED LAND CORNER RECORDATION

DESCRIPTION OF CORNER EVIDENCE FOUND, AND ORIGINAL RECORD (If known)

LOCATION
 S.23 | S.24
 S.26 | S.25
 T.16N., R.67W.
 6th P.M.

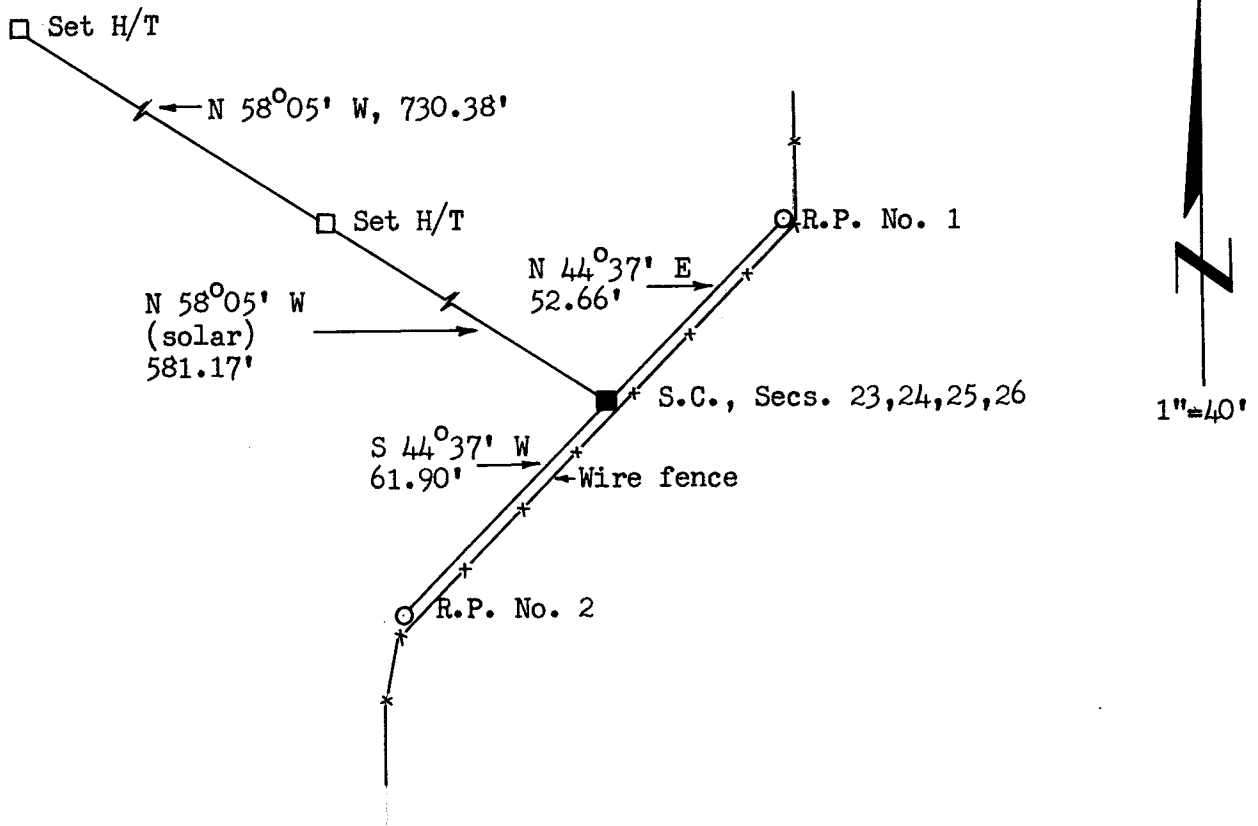
Found granite stone, 8" x 10", with two grooves on south face and one groove on east face. Top of stone projects 8" above ground surface.

U.S. B.L.M. Volume 6, page 319 (John B. Thomas, May 24, 1871)
 . . . Set a Granite Boulder 16 x 6 x 6 for corner

DESCRIPTION OF MONUMENT AND ACCESSORIES ESTABLISHED TO PERPETUATE THE ORIGINAL LOCATION OF THIS CORNER:

1. Chiseled "X" in top of stone.
2. R.P. No. 1 - Set a 5/8" dia. x 24" long rebar with a Surv KAP, bears N 44° 37' E, 52.66 feet distant.
3. R.P. No. 2 - Set a 5/8" dia. x 24" long rebar with a Surv KAP, bears S 44° 37' W, 61.90 feet distant.

SKETCH, WITH COURSE AND DISTANCE TO ADJACENT CORNER IF DETERMINED IN THIS SURVEY.
 (May Sketch or Paste Reproduction on Reverse Side.)



I, R.L. Hudson certify that I have carefully performed or reviewed the work done on the diagrammed corner as reported on this recordation form and approve the same.

R.L. Hudson Wyoming L.S. No. 519
 Signature of Surveyor Registration No.

STATE OF WYOMING,
 Office of Clerk and Recorder,
 County of Laramie

This "corner record" was filed for record on the 2nd day of December, 1971, was noted on the cross-index plat and is assigned page No. 16-67, in book No. ANE.

John B. Hillman tw
 County Official

Cross Index No. _____	T. _____	R. _____	Mer. _____
_____	T. _____	R. _____	Mer. _____
_____	T. _____	R. _____	Mer. _____
_____	T. _____	R. _____	Mer. _____
_____	T. _____	R. _____	Mer. _____
_____	T. _____	R. _____	Mer. _____
_____	T. _____	R. _____	Mer. _____